

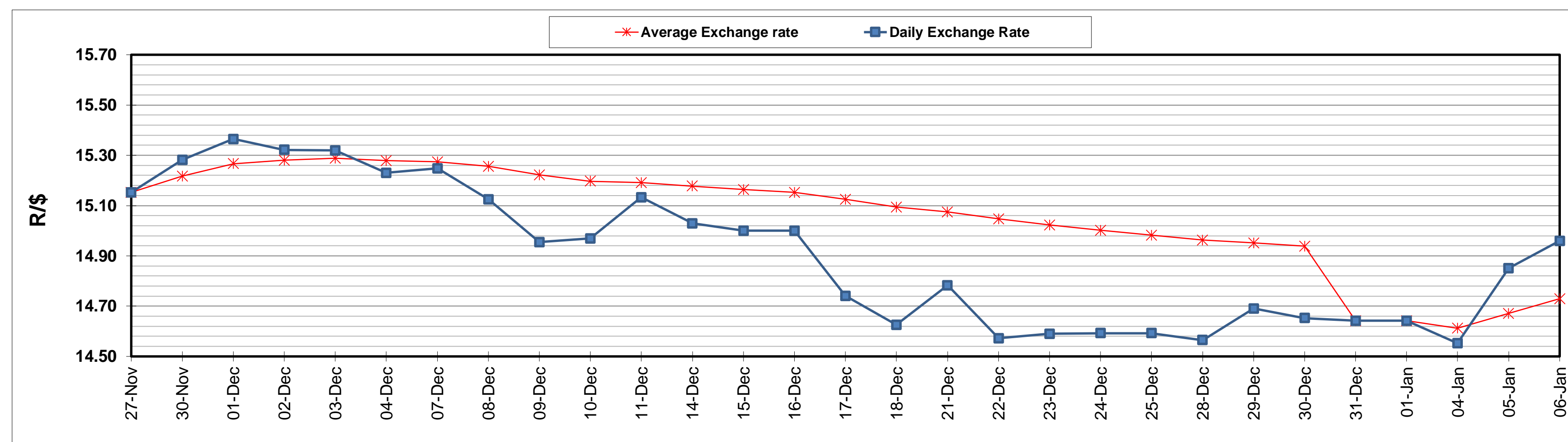
	PETROL 95 ULP	PETROL 93 ULP & LRP	DIESEL 0.05%	DIESEL 0.005%	ILL. PAR.
GAUTENG PUMP PRICE (SA c/l) AS FROM 06/01/2021	1,486.000	1,469.000	-	-	-
WHOLESALE PRICE (SA c/l) AS FROM 06/01/2021	-	-	1,300.420	1,301.820	739.688
SINGLE NATIONAL MAXIMUM RETAIL PRICE	-	-	-	-	930.000
BASIC FUEL PRICE - 06/01/2021 (SA c/l)	579.523	574.306	576.472	578.657	563.914
PRESS RELEASE CONTRIBUTION TO BFP 06/01/2021 - 06/01/2021 (SA c/l)	519.170	512.170	541.630	543.030	527.128
UNIT OVER/(UNDER) RECOVERY - 06/01/2021 (SA c/l)	(60.353)	(62.136)	(34.842)	(35.627)	(36.786)
AVERAGE BASIC FUEL PRICE 31/12/2020 - 06/01/2021	552.036	546.026	556.065	558.265	542.810
AVERAGE UNIT OVER/(UNDER) RECOVERY 31/12/2020 - 06/01/2021	(64.866)	(68.256)	(58.435)	(58.435)	(59.682)

ANALYSIS MOVEMENT OF AVERAGE OVER/(UNDER) RECOVERY

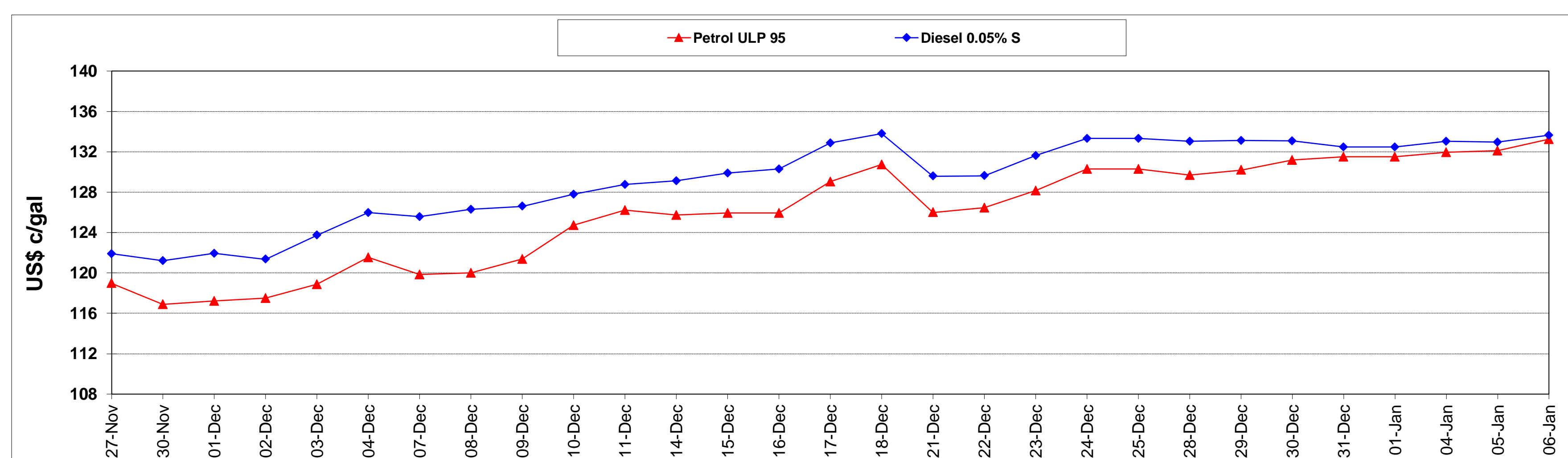
	PETROL 95	PETROL 93	DIESEL 0.05%	DIESEL 0.005%	ILL. PAR.
- MOVEMENT IN INTERNATIONAL PRODUCT PRICES	(72.725)	(76.030)	(66.352)	(66.383)	(67.410)
- MOVEMENT IN EXCHANGE RATE	7.859	7.774	7.917	7.948	7.728
AVERAGE UNIT OVER/(UNDER) RECOVERY 31/12/2020 - 06/01/2021	(64.866)	(68.256)	(58.435)	(58.435)	(59.682)

R/\$ EXCHANGE RATE - (R/\$14.9600 - 06/01/2021)

EXCHANGE RATE USED IN BASIC FUEL PRICE



INTERNATIONAL PRODUCT PRICES OF BASKET USED IN BASIC FUEL PRICE



BASIC FUEL PRICE IN SA CENTS PER LITRE

